



CGGBP1 Polyclonal Antibody

Catalog No	YP-Ab-01607
Isotype	IgG
Reactivity	Human;Mouse
Applications	IHC;IF;ELISA
Gene Name	CGGBP1
Protein Name	CGG triplet repeat-binding protein 1
Immunogen	The antiserum was produced against synthesized peptide derived from human CGGBP1. AA range:41-90
Specificity	CGGBP1 Polyclonal Antibody detects endogenous levels of CGGBP1 protein.
Formulation	Liquid in PBS containing 50% glycerol, 0.5% BSA and 0.02% sodium azide.
Source	Polyclonal, Rabbit,IgG
Purification	The antibody was affinity-purified from rabbit antiserum by affinity-chromatography using epitope-specific immunogen.
Dilution	IHC: 1/100 - 1/300. ELISA: 1/5000.. IF 1:50-200
Concentration	1 mg/ml
Purity	≥90%
Storage Stability	-20°C/1 year
Synonyms	CGGBP1; CGGBP; CGG triplet repeat-binding protein 1; CGG-binding protein 1; 20 kDa CGG-binding protein; p20-CGGBP DNA-binding protein
Observed Band	
Cell Pathway	Nucleus .
Tissue Specificity	Ubiquitous. Highly expressed in placenta, thymus, lymph nodes, cerebellum and cerebral cortex. Low expression in other regions of the brain.
Function	developmental stage:Expressed in fetal brain and kidney. Lower expression in fetal liver and lung.,function:Binds to nonmethylated 5'-d(CGG)(n)-3' trinucleotide repeats in the FMR1 promoter. May play a role in regulating FMR1 promoter.,miscellaneous:Binding is severely inhibited by complete or partial cytosine-specific DNA methylation of the binding motif.,PTM:Phosphorylated upon DNA damage, probably by ATM or ATR.,tissue specificity:Ubiquitous. Highly expressed in placenta, thymus, lymph nodes, cerebellum and cerebral cortex. Low expression in other regions of the brain.,
Background	CGGBP1 influences expression of the FMR1 gene (MIM 309550), which is associated with the fragile X mental retardation syndrome (MIM 300624), by specifically interacting with the 5-prime (CGG)n-3-prime repeat in its 5-prime UTR.[supplied by OMIM, Mar 2008],



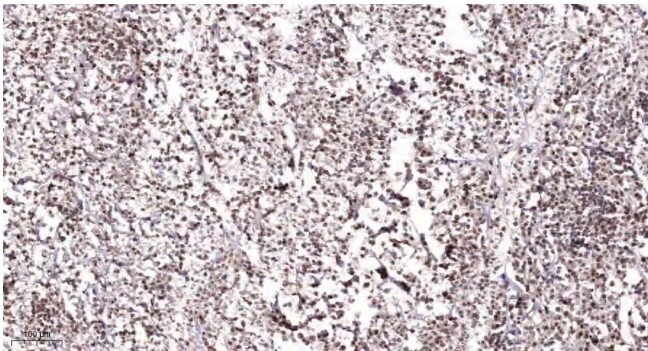
matters needing attention

Avoid repeated freezing and thawing!

Usage suggestions

This product can be used in immunological reaction related experiments. For more information, please consult technical personnel.

Products Images



Immunohistochemical analysis of paraffin-embedded human Colon cancer. 1, Antibody was diluted at 1:200(4° overnight). 2, Tris-EDTA,pH9.0 was used for antigen retrieval. 3,Secondary antibody was diluted at 1:200(room temperature, 45min).